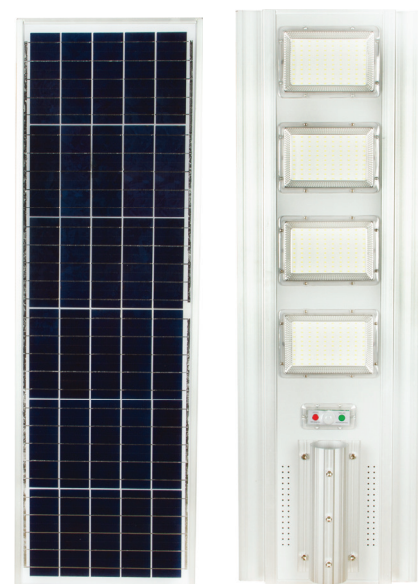


INSTALLATION INSTRUCTION LED SOLAR STREETLIGHT

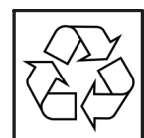
TECHNICAL DATA

MODEL	VT-20201ST	VT-30301ST	VT-40401ST
AUTO ON MODE	1400	2000	2200
SENSOR MODE	2300	3500	4300
WATTS	200	350	400
SOLAR PANEL WATTS	33	40	50
DC: VOLTAGE	3.2V	3.2v	3.2v
CHARGING TIME	4-6H	4-6H	4-6H
WORKING TIME	8-10H	8-10H	8-10H
BATTERY CAPACITY	30 Ah	40 Ah	60 Ah
DIMENSION	680x320x50mm	900x320x50mm	1000x320x50mm
BEAM ANGLE	120°	120°	120°
BODY TYPE	POLYCRYSTALLINE SILICON PANEL		



INTRODUCTION & WARRANTY

Thank you for selecting and buying V-TAC product. V-TAC will serve you the best. Please read these instructions carefully before starting the installation and keep this manual handy for future reference. If you have any another query, please contact our dealer or local vendor from whom you have purchased the product. They are trained and ready to serve you at the best. The warranty is valid for 2 years from the date of purchase. The warranty does not apply to damage caused by incorrect installation or abnormal wear and tear. The company gives no warranty against damage to any surface due to incorrect removal and installation of the product. This product is warranted for manufacturing defects only



This marking indicates that this product should not be disposed of with other household wastes.



WARNING!

1. Please make sure to turn off the power before starting the installation.
2. Installation must be performed by a qualified electrician.
3. The light source of this luminaire is not replaceable, when the light source reaches its end of life the whole luminaire should be replaced.
4. If the external flexible cable or cord of this luminaire is damaged, it shall be exclusively replaced by the manufacturer or his service agent or a similar qualified person in order to avoid a hazard.
5. Replace any cracked protective shield.



Non-replaceable control gear

Non-replaceable light source



MULTI-LANGUAGE MANUAL QR CODE

Please scan the QR code to access the manual in multiple languages.

PARTS INCLUDED



Pilot

Naciśnij raz: 100% jasności
Naciśnij dwa razy: 50% jasności
Naciśnij trzy razy: czerwony / niebieski

Wymuś włączenie

Wymuś wyłączenie

Zwiększ jasność

Zmniejsz jasność

Wskaźnik ładowania

Jasność 100%

2 godziny

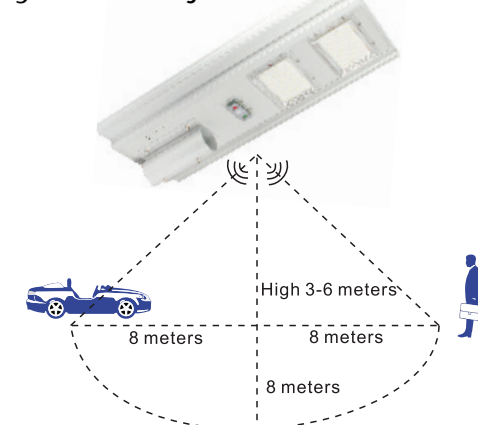
Jasność 50%

6 godzin

TRYB AUTO
Włącz w nocy
Wyłącz w dzień

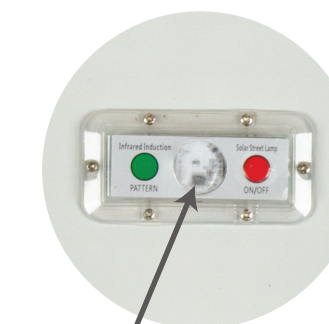
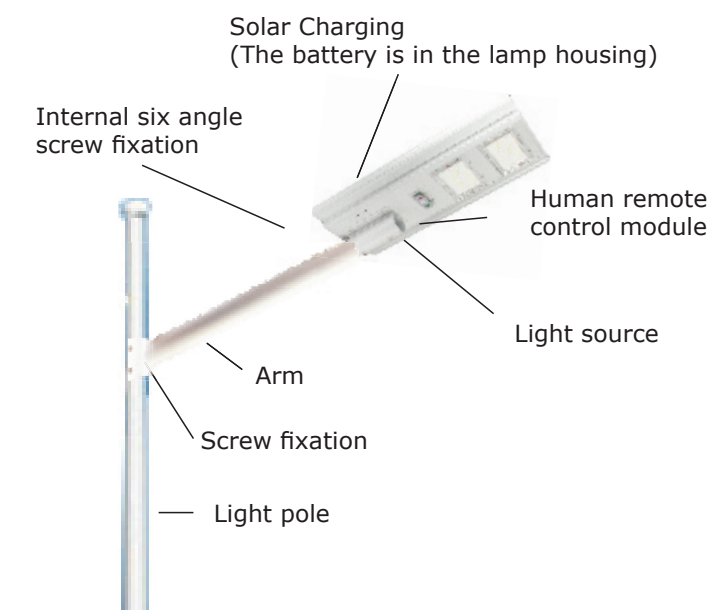


Tryb detekcji ruchu



Naciśnij przycisk czujnika.
Gdy obiekt wejdzie do obszaru detekcji światło włączy się automatycznie.
Gdy obiekt wyjdzie z obszaru detekcji po 15 sekundach strumień światła obniży się do poziomu 20%

INSTALLATION



REMOTE CONTROL SENSOR

NOTE: The battery must be fully charged before using 3-5 rainy days

INSTALLATION GUIDE:

1. Before installing please remove all the parts to check if all are in good condition or not.
2. Please makes sure the solar light is adjusted in correct angle in order to receive sunlight.
3. The remote control is designed with an operation distance of 6-8m
4.
 - A. The lamp comes with 3 inflated studs.
 - B. Solar light cannot be installed in low-lying areas, so as not to soak.
 - C. Installation can be mounted through wall or pole.
5. After installation test the light using the remote control.

MAINTENANCE & WARNING

- Do not use solvents, petrol, etc. Otherwise the light will be damaged.
- Clean the light with a dry, lint-free cloth.
- Check the solar panel on the back of solar light for dirt regularly. If dirt or is present remove it to guarantee flawless function of the product.
- Especially during the winter, keep the product free from snow and ice.
- Confirm installation direction is correct (solar panel should be at top)
- Confirm no objects blocking the solar panel to receive sunlight
- Keep away from the fire.
- Don't immerse in the water

IN CASE OF ANY QUERY/ISSUE WITH THE PRODUCT, PLEASE REACH OUT TO US AT: SUPPORT@V-TAC.EU
FOR MORE PRODUCTS RANGE, INQUIRY PLEASE CONTACT OUR DISTRIBUTOR OR NEAREST DEALERS. V-TAC EUROPE LTD. BULGARIA, PLOVDIV 4000, BUL.L.KARAVELOW 9B