



Meaningful Innovation.

WEEE Number: 80133970

## INSTRUCTION MANUAL

### LED FLOOD LIGHT

#### TECHNICAL DATA

MODEL	VT-44036CCT	VT-44056CCT	VT-44107CCT
SKU	23769	23768	23767
POWER	30W	50W	100W
USEFUL LUMENS (@WIDE CONE 120°)	2350 Lm	4000 Lm	8150 Lm
INPUT VOLTAGE	AC: 220-240V, 50/60Hz		
DF	>0.9		
CRI	≥80		
LIFE SPAN	20,000 Hours		
ON/OFF CYCLE	10,000 Times		
BEAM ANGLE	110°		
OPERATION TEMPERATURE	-20°C to +40°C		
BODY TYPE	Aluminium		
WIRE LENGTH	200MM		
MOUNTING HEIGHT	3-4M	3-4M	5-7M
NET WEIGHT	250g	370g	720g
PROJECTED AREA (m <sup>2</sup> )	20-30	30-40	100-150
DIMENSION	159x158x38mm	205x193x38mm	241x273x38 mm



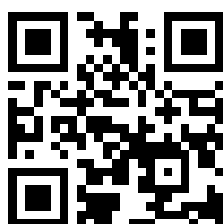
**02** YEAR  
WARRANTY\*

**IP65**  
RATING

**3** IN 1  
CCT

#### INTRODUCTION & WARRANTY

Thank you for selecting and buying V-TAC product. V-TAC will serve you the best. Please read these instructions carefully before starting the installation and keep this manual handy for future reference. If you have any another query, please contact our dealer or local vendor from whom you have purchased the product. They are trained and ready to serve you at the best. The warranty is valid for 2 years from the date of purchase. The warranty does not apply to damage caused by incorrect installation or abnormal wear and tear. The company gives no warranty against damage to any surface due to incorrect removal and installation of the product. The products are suitable for 10-12 Hours Daily operation. Usage of product for 24 Hours a day would void the warranty. This product is warranted for manufacturing defects only.



#### MULTI-LANGUAGE MANUAL QR CODE

Please scan the QR code  
to access the manual in  
multiple languages.



FR

Cet appareil,  
ses accessoires  
et cordons  
se recyclent

À DÉPOSER  
EN MAGASIN




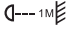
À DÉPOSER  
EN DÉCHÈTERIE

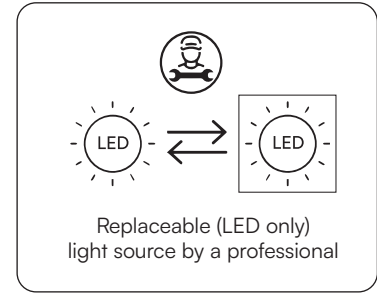


ou

Points de collecte sur [www.quefairedemesdechets.fr](http://www.quefairedemesdechets.fr)  
Privilégiez la réparation ou le don de votre appareil !

## WARNING

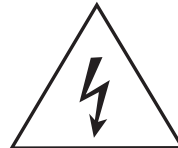
1. Please make sure to turn off the power before starting the installation.
2. Installation must be performed by a qualified electrician.
3. If the external flexible cable or cord of this luminaire is damaged, it shall be exclusively replaced by the manufacturer or his service agent or a similar qualified person in order to avoid a hazard.
4. Terminal block not included.
5. Proper grounding should be ensured throughout the installation.
6. Replace any cracked protective shield. 
7. Minimum distance from lighted objects 1m. 
8. For outdoor use



**NOTE:** To reduce the risk of strangulation the flexible wiring connected to this luminaire shall be effectively fixed to the wall if the wiring is within arm's reach.

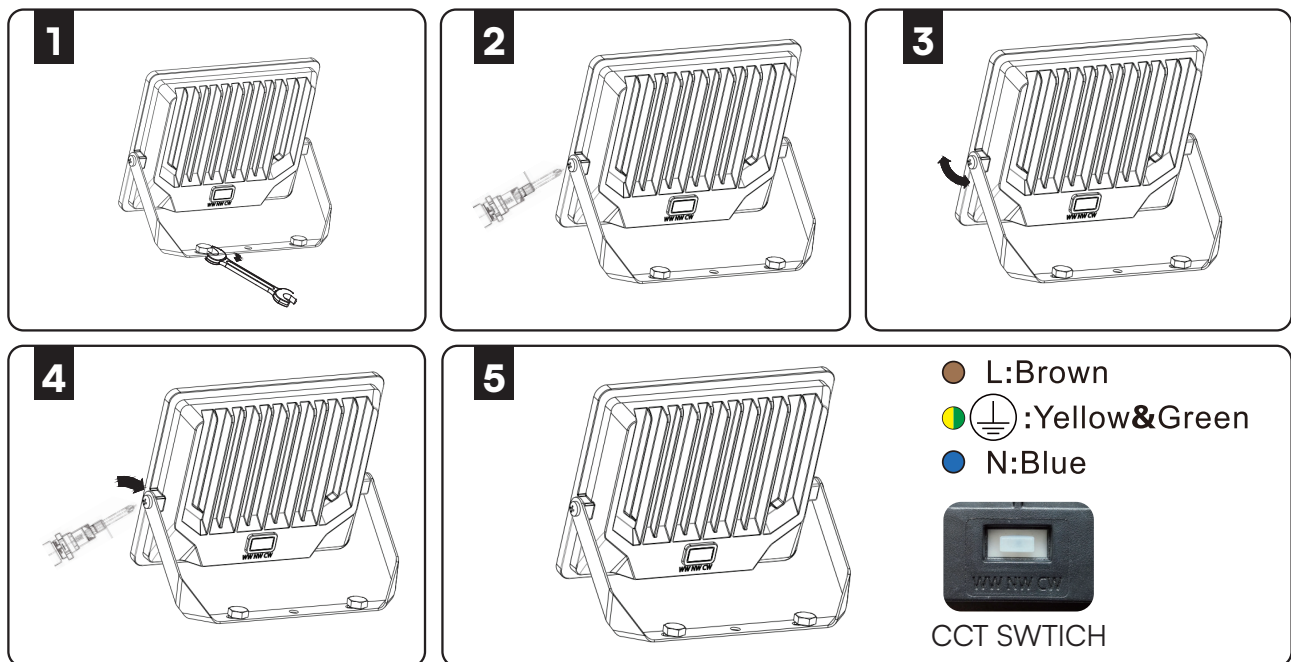


This marking indicates that this product should not be disposed of with other household wastes.



Caution, risk of electric shock.

## INSTALLATION DIAGRAM



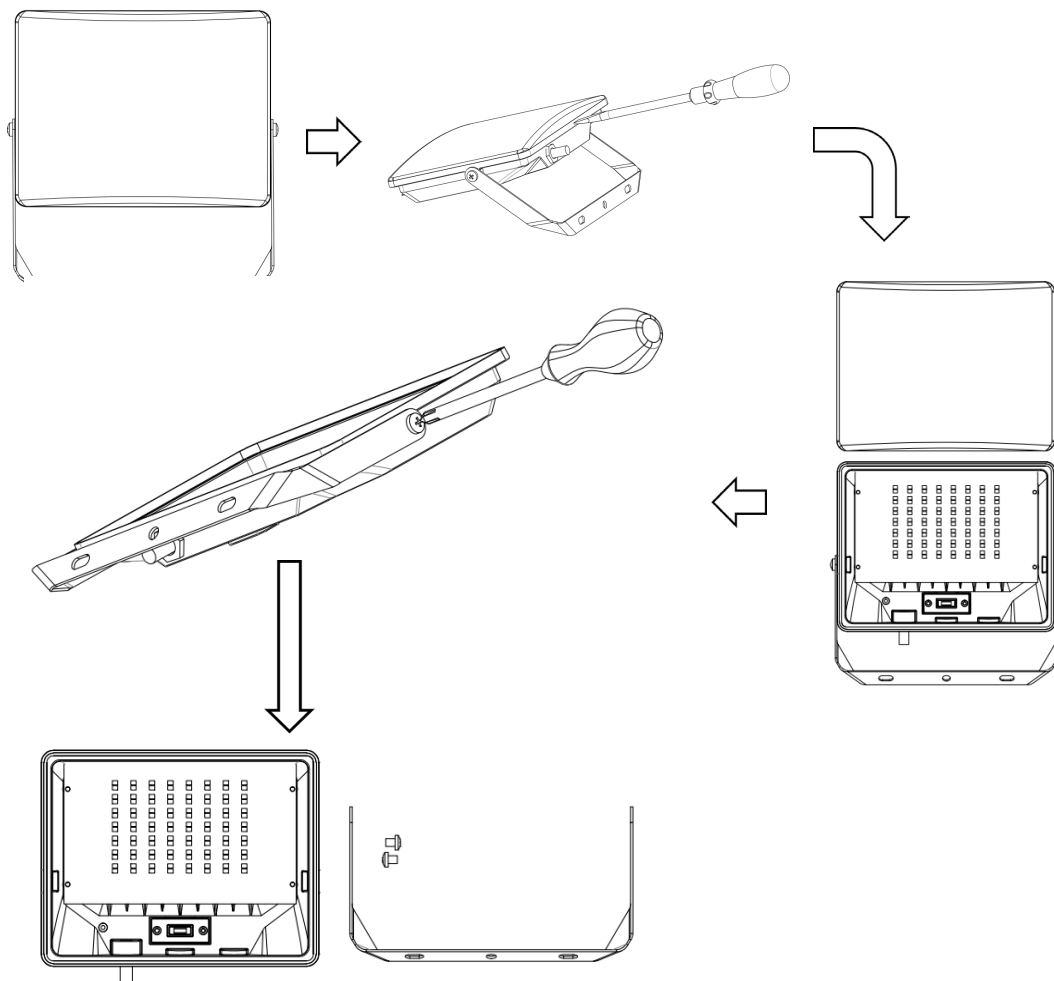
## INSTALLATION INSTRUCTION

Strictly follow these instructions for installing, avoid the intensity of power cable during installing. (Supply connection and other external wiring conductor shall be at least 3\*1.0 mm<sup>2</sup> and confirm to 60245IEC57)

1. Turn off the power.
2. Installing the brackets.
3. Loosening the bolts on both sides of the bracket.
4. Adjusting the flooding Angle of the flood light.
5. Tightening the bolts on both sides of the bracket.
6. Connecting the wiring of the flood light as per the diagram.
7. Turning on the power to make sure the light is working.

## DISMANTLING INSTRUCTIONS

(For Market surveillance team only)



Note: Light source removal will void the warranty

**V-TAC EUROPE LTD.** IN CASE OF ANY QUERY/ISSUE WITH THE PRODUCT, PLEASE REACH OUT TO US AT: [SUPPORT@V-TAC.EU](mailto:SUPPORT@V-TAC.EU)  
FOR MORE PRODUCTS RANGE, INQUIRY PLEASE CONTACT OUR DISTRIBUTOR OR NEAREST DEALERS.  
V-TAC EUROPE LTD. BULGARIA, PLOVDIV 4000, BUL.L.KARAVELOW 9B

**V-TAC WEST EUROPE LTD.** IN CASE OF ANY QUERY/ISSUE WITH THE PRODUCT, PLEASE REACH OUT TO US AT: [SUPPORT@V-TAC.EU](mailto:SUPPORT@V-TAC.EU)  
FOR MORE PRODUCTS RANGE, INQUIRY PLEASE CONTACT OUR DISTRIBUTOR OR NEAREST DEALERS.  
V-TAC WEST EUROPE LTD. GROUND FLOOR, 71 LOWER BAGGOT STREET, DUBLIN 02, IRELAND D02 P593

**V-TAC UK LTD.** IN CASE OF ANY QUERY/ISSUE WITH THE PRODUCT PLEASE REACH OUT TO US AT  
[SUPPORT@VTACEXPORTS.COM](mailto:SUPPORT@VTACEXPORTS.COM) V-TAC, 5A TUNGSTEN PARK, DOWNS ROAD, WITNEY, OXFORDSHIRE, OX29 0AX

