



WEEE Number: 80133970

Product Installation Manual

8.5W LED hanging lamp ?100 white body 3000K

1. Preparation for Installation:

Before starting installation work, read the entire manual carefully. Installation of the product or connection of the luminaire may be carried out only by a person holding the appropriate qualifications to work with electrical equipment. Before starting installation, the power supply must be disconnected.

2. Wiring Connection:

All wires must be connected in accordance with the manual and the applicable standards and regulations. The manufacturer is not responsible for damage resulting from incorrect installation, which is not covered by the warranty.

3. Operational Safety:

Never use the product if it has a damaged cable, switch, or any other components. If a fault is found, repairs may be carried out only by an authorised person. The product or luminaire must be protected against mechanical damage and shocks, both during installation and during everyday use.

4. Product Protection:

Avoid contact between the product and corrosive substances or any other chemicals that may damage insulating materials or the outer surface. Prevent moisture from entering and protect the product against accidental flooding.

5. Prohibitions and Warnings:

Do not interfere with the structure of the product or the luminaire and do not make any modifications. In the case of luminaires that emit heat, do not cover the lamp and do not place it near flammable materials. Luminaires are not intended for play and must not be left unattended in the presence of children. Before starting installation, switch off the power supply by disconnecting it or by removing/unscrewing the fuse. The connection must be made using a certified terminal block.

6. Maintenance and Cleaning:

Before cleaning, disconnect the product from the power supply and allow it to cool down. When cleaning, avoid moisture entering the electrical parts and the wire connection points. Use a soft, slightly damp cloth, and before switching on again wait until it is completely dry.

7. Light Source Replacement:

In products with a replaceable light source, before replacing the light source disconnect the luminaire from the power supply and wait until it has cooled down. Replace with a new light source, without exceeding the recommended maximum wattage. Pay attention to the WEEE label, which reminds you of the need for proper disposal of the device.



In case of any questions or problems with the product, please contact us at: support@v-tac.eu
V-TAC EUROPE LTD, Bulgaria, Płowdiw 4000, bul. L. Karavelow 9B.
For more information about our product range, please contact our distributor:
LED Europe Sp. z o.o. mail: biuro@led-europe.pl



WEEE Number: 80133970

Additional Information

1. Fire Protection

Before starting installation, make sure that the installation location is not exposed to flammable materials. Do not install products or luminaires near heat sources or flammable substances. If smoke, a burning smell, or sparking occurs, immediately disconnect the product or luminaire from the power supply and contact a qualified electrician.

2. Declarations of Conformity

The product meets the requirements of Directives 2014/30/EU and 2014/35/EU and the relevant Polish Standards (PN-EN). The Declaration of Conformity is available from the manufacturer upon request. To confirm compliance with European and Polish standards, contact the distributor or visit the manufacturer's website.

3. Polish Safety Standards

Installation and use of products and luminaires must comply with PN-EN standards relating to the safety of electrical installations. Electrical cables and connections must be made in accordance with Polish Standards and local regulations.

4. Environmental Protection

In accordance with the Act on waste electrical and electronic equipment, electrical products, including luminaires, must not be disposed of with household waste. Products are subject to separate waste collection. Check local recycling regulations and available collection points for used devices. Pay attention to the WEEE label, which reminds you of the need for proper disposal of the device.

5. Procedure in the Event of a Fault

In the event of damage to the device, disconnect it from the power supply and do not attempt to repair it yourself. Repairs must be carried out only by a qualified electrician. If the product does not operate correctly, contact an authorised service centre or the manufacturer using the contact details provided in the manual.

6. Types of Mounting Surfaces

Make sure that the product or luminaire is installed on stable, non-flammable, and durable surfaces. Do not install on flammable surfaces or in locations where the product may be exposed to intense vibrations.



In case of any questions or problems with the product, please contact us at: support@v-tac.eu
V-TAC EUROPE LTD. Bulgaria, Płowdiw 4000, bul. L. Karavelow 9B.
For more information about our product range, please contact our distributor:
LED Europe Sp. z o.o. mail: biuro@led-europe.pl

V-TAC

Meaningful Innovation.

WEEE Number: 80133970

Explanation of Symbols



Crossed-out Wheelie Bin Symbol: Indicates that waste electrical and electronic equipment must be collected separately. Such equipment must not be disposed of with household waste, as it may contain substances harmful to the environment. Proper disposal helps protect natural resources and human health. Information on collection points can be obtained from the retailer or the local authority.



Compliance with European Standards: The product meets European technical standards, including Directives 2014/30/EU and 2014/35/EU, and bears the CE marking, which confirms its compliance with safety and environmental protection requirements.



This symbol indicates **earthing** (ground). It is used on electrical equipment to show that a given component or circuit must be connected to the protective conductor (earth), which leads to the earthing point. Earthing ensures safe operation by protecting against electric shock.



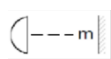
This symbol indicates **Class II equipment** in terms of protection against electric shock. Class II equipment is provided with double or reinforced insulation, which offers additional protection against electric shock and eliminates the need for a protective conductor (earth).



This symbol indicates **Class III equipment** in terms of protection against electric shock. Class III equipment is supplied with Safety Extra-Low Voltage (SELV), which provides protection against electric shock. It does not require additional protection or earthing, because the voltage used is low enough not to pose a hazard to the user.



This symbol indicates that the luminaire is suitable for mounting on **normally flammable surfaces**. This means the luminaire can be safely installed on materials that do not ignite easily.



This symbol indicates **the minimum distance from illuminated objects**. It means the luminaire should be installed at the distance shown on the symbol (in metres) to prevent overheating and the risk of damage to illuminated surfaces.



This symbol indicates that **the product or its packaging is recyclable**. It shows that the materials used in production can be recycled, which contributes to environmental protection and promotes sustainable waste management.



This symbol indicates that **the luminaire is intended for indoor use**. This means it is not suitable for outdoor use or for locations exposed to moisture or adverse weather conditions.

IP20

The IP rating consists of two digits:

- First digit (0–6): **Protection against solid objects and dust**, ranging from no protection (0) to dust-tight (6).
- Second digit (0–9): **Protection against water**, ranging from no protection (0) to protection against high-pressure water (9). For example, IP65 indicates protection against dust and against water jets.

Made in China.

Distributor in Poland: LED Europe sp. z o.o., headquartered in Łódź (93-491), ul. Starogardzka 18.

RoHS



UK
CA



In case of any questions or problems with the product, please contact us at: support@v-tac.eu

V-TAC EUROPE LTD, Bulgaria, Płowdiw 4000, bul. L. Karavelow 9B.

For more information about our product range, please contact our distributor:

LED Europe Sp. z o.o. mail: biuro@led-europe.pl