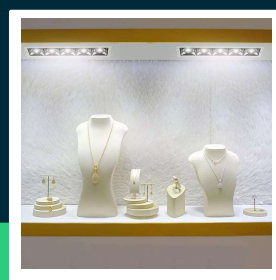
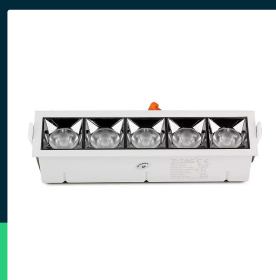
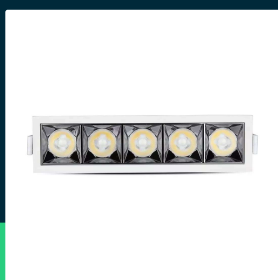
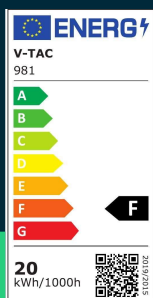




**LED downlight SAMSUNG CHIP 20W SMD reflector 12° 2700K**

SKU 981 EAN 3800157650342 VT-2-21

Related products (SKUs): 980, 979



**TECHNICAL SPECIFICATION**

Power	20W	CRI	90+	Brand	V-TAC
Luminous flux (lm)	1600 lm	Material	Aluminium	Warranty	5y
Light color	Warm white	Housing color	White	Certifications	CE, EMC, ROHS
Color temperature	2700K	Dimming	NIE	Efficacy (lm/W)	80 lm/W
Beam angle	12°	IP rating	IP20	Additional information	UGR<19 CRI90+
Voltage	230V	Rotation	NIE	ETIM	ECO02892
SKU	SKU 981	Ignition time (100%)	0.001s	CN code	8539 51 00
EAN barcode	3800157650342	Color consistency	<6	EPREL	987601
Product code	VT-2-21	Size	207x54x47mm		
Series	Downlight	Mounting size	200x45mm		
Energy class	F	Product weight	0,589		
Base	Integrated LED fixture	Volume	0,000968		
Shape	Rectangle	Pack length	220mm		
LED module type	SAMSUNG	Pack width	55mm		
Lifetime	30000h	Pack height	80mm		
Power factor	>0,9	Master carton	20		

**LED downlight SAMSUNG CHIP 20W SMD reflector 12° 2700K**

SKU 981    EAN 3800157650342    VT-2-21

Related products (SKUs): 980, 979

## Product description

- Excellent color rendering index CRI 90+
- 5-year warranty
- SAMSUNG LED chip
- Various colors of light - warm, neutral and cold
- High-quality aluminum body
- No flickering - Flicker Free
- UGR <19
- Available beam angles 12° / 38°
- Available colors 2700K / 4000K / 5700K
- Life time 30 000h
- Quick connector included

## GPSR Information

- Manufacturer: V-TAC Europe Ltd. Address: bul. "Rozhen" 41, 1271 Sofia, Bulgaria, office@v-tac.eu
- Importer: V-TAC Europe Ltd. Address: bul. "Rozhen" 41, 1271 Sofia, Bulgaria, office@v-tac.eu
- Distributor and importer in Poland: Led Europe Sp. z o.o. Address: ul. Starorudzka 12E 93-491 Łódź, Poland, biuro@led-europe.pl
- Documents confirming compliance of products with applicable safety standards are available on the website [www.v-tac.eu](http://www.v-tac.eu). If the required documentation is not available, please contact the local distributor: [biuro@led-europe.pl](mailto:biuro@led-europe.pl)
- If you have any problems with the product, contact the distributor in Poland: [biuro@led-europe.pl](mailto:biuro@led-europe.pl)
- Country of production: China