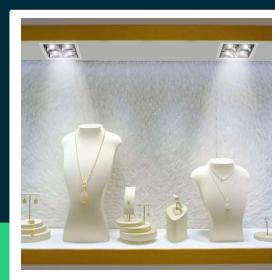
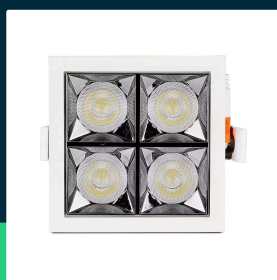
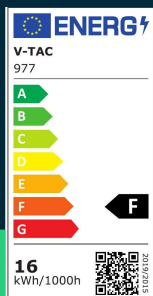




**LED downlight SAMSUNG CHIP 16W SMD reflector 12° 4000K**

SKU 977 EAN 3800157650304 VT-2-16

Related products (SKUs): 976, 978



**TECHNICAL SPECIFICATION**

Power	16W	CRI	90+	Brand	V-TAC
Luminous flux (lm)	1280 lm	Material	Aluminium	Warranty	5y
Light color	Neutral white	Housing color	White	Certifications	CE, EMC, ROHS
Color temperature	4000K	Dimming	NIE	Efficacy (lm/W)	80 lm/W
Beam angle	12°	IP rating	IP20	Additional information	UGR<19 CRI90+
Voltage	230V	Rotation	NIE	ETIM	ECO02892
SKU	SKU 977	Ignition time (100%)	0.001s	CN code	8539 51 00
EAN barcode	3800157650304	Color consistency	<6	EPREL	987597
Product code	VT-2-16	Size	93x93x47mm		
Series	Downlight	Mounting size	85x85mm		
Energy class	F	Product weight	0,467		
Base	Integrated LED fixture	Volume	0,000726		
Shape	Square	Pack length	120mm		
LED module type	SAMSUNG	Pack width	110mm		
Lifetime	30000h	Pack height	55mm		
Power factor	>0,9	Master carton	50		

**LED downlight SAMSUNG CHIP 16W SMD reflector 12°  
4000K**

SKU 977    EAN 3800157650304    VT-2-16

Related products (SKUs): 976, 978

## Product description

- Excellent color rendering index CRI 90+
- 5-year warranty
- SAMSUNG LED chip
- Various colors of light - warm, neutral and cold
- High-quality aluminum body
- No flickering - Flicker Free
- UGR <19
- Available beam angles 12° / 38°
- Available colors 2700K / 4000K / 5700K
- Life time 30 000h
- Quick connector included

## GPSR Information

- Manufacturer: V-TAC Europe Ltd. Address: bul. "Rozhen" 41, 1271 Sofia, Bulgaria, office@v-tac.eu
- Importer: V-TAC Europe Ltd. Address: bul. "Rozhen" 41, 1271 Sofia, Bulgaria, office@v-tac.eu
- Distributor and importer in Poland: Led Europe Sp. z o.o. Address: ul. Starorudzka 12E 93-491 Łódź, Poland, biuro@led-europe.pl
- Documents confirming compliance of products with applicable safety standards are available on the website [www.v-tac.eu](http://www.v-tac.eu). If the required documentation is not available, please contact the local distributor: [biuro@led-europe.pl](mailto:biuro@led-europe.pl)
- If you have any problems with the product, contact the distributor in Poland: [biuro@led-europe.pl](mailto:biuro@led-europe.pl)
- Country of production: China