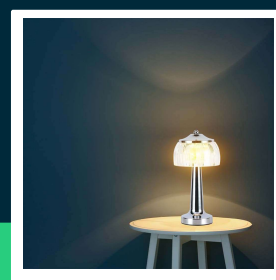
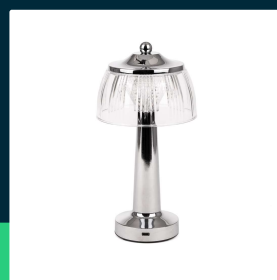
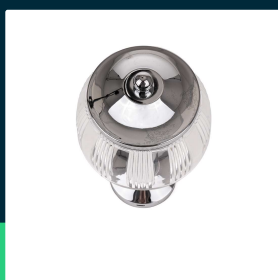




LED table lamp 1800mah batteryd:13.5*26.5 chrome BODY3IN1

SKU 7939 EAN 3800170202184 VT-1048

Related products (SKUs): 7938



TECHNICAL SPECIFICATION

Power	1W	Type	Rechargeable	Additional information	USB Type-C charging port
Luminous flux (lm)	55 lm	Dimming	TAK	ETIM	EC000302
Light color	CCT tunable white	IP rating	IP20	CN code	9405 29 40
Color temperature	3000K-6000K	Ignition time (100%)	0.001s		
Beam angle	180°	Size	135x265mm		
Voltage	Battery	Cable length	1m (included)		
SKU	SKU 7939	Product weight	1		
EAN barcode	3800170202184	Volume	1		
Product code	VT-1048	Pack length	150mm		
Series	Desk lighting	Pack width	150mm		
Base	Integrated LED fixture	Pack height	280mm		
LED module type	SMD	Master carton	10		
Input voltage	DC:5V, 1A	Brand	V-TAC		
CRI	80+	Warranty	2y		
Material	Metal, acrylic	Certifications	CE, EMC, ROHS		
Housing color	Chrome	Efficacy (lm/W)	55 lm/W		



**LED table lamp 1800mah batteryd:13.5*26.5 chrome
BODY3IN1**

SKU 7939 EAN 3800170202184 VT-1048

Related products (SKUs): 7938

Product description

- High-quality and durable LED lamp
- Perfect for use at home, living room, bedroom as well as in restaurants, bars, gardens and camping
- Rechargeable
- Touch switch with dimming function
- Extremely low energy consumption
- Available in various colors

GPSR Information

- Manufacturer: V-TAC Europe Ltd. Address: bul. "Rozhen" 41, 1271 Sofia, Bulgaria, office@v-tac.eu
- Importer: V-TAC Europe Ltd. Address: bul. "Rozhen" 41, 1271 Sofia, Bulgaria, office@v-tac.eu
- Distributor and importer in Poland: Led Europe Sp. z o.o. Address: ul. Starorudzka 12E 93-491 Łódź, Poland, biuro@led-europe.pl
- Documents confirming compliance of products with applicable safety standards are available on the website www.v-tac.eu. If the required documentation is not available, please contact the local distributor: biuro@led-europe.pl
- If you have any problems with the product, contact the distributor in Poland: biuro@led-europe.pl
- Country of production: China