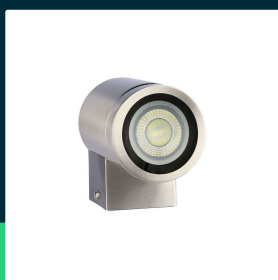




**Wall sleek fitting GU10 steel body 1 way IP44**

SKU 7506 EAN 3800157617659 VT-7641

Related products (SKUs): ---



**TECHNICAL SPECIFICATION**

Voltage	230V	Pack length	110mm
SKU	SKU 7506	Pack width	80mm
EAN barcode	3800157617659	Pack height	125mm
Product code	VT-7641	Master carton	24
Series	Garden wall sconces	Quantity per pallet	1536
Base	GU10	Brand	V-TAC
Input voltage	AC 220-240V	Warranty	2y
Frequency	50Hz	Certifications	CE, EMC, ROHS
Material	Stainless steel	Additional information	Model 3
Housing color	Brushed steel	Parameters	Without motion sensor
Type	Wall	ETIM	EC000301
IP rating	IP44	CN code	8539 51 00
Compatibility	GU10		
Size	105x76x118mm		
Product weight	0,395		
Volume	0,0011		

**Wall sleek fitting GU10 steel body 1 way IP44**

SKU 7506 EAN 3800157617659 VT-7641

Related products (SKUs): ---

## Product description

- The angle of light distribution, color and power depend on the light sources used
- Operates in extreme temperatures from -20° to +45°
- Specially designed for outdoor use
- IP44 protection rating for safety
- The luminaire is adapted to GU10 light sources
- Material - brushed acid steel
- Dimensions 105x76x118mm

## GPSR Information

- Manufacturer: V-TAC Europe Ltd. Address: bul. "Rozhen" 41, 1271 Sofia, Bulgaria, office@v-tac.eu
- Importer: V-TAC Europe Ltd. Address: bul. "Rozhen" 41, 1271 Sofia, Bulgaria, office@v-tac.eu
- Distributor and importer in Poland: Led Europe Sp. z o.o. Address: ul. Starorudzka 12E 93-491 Łódź, Poland, biuro@led-europe.pl
- Documents confirming compliance of products with applicable safety standards are available on the website www.v-tac.eu. If the required documentation is not available, please contact the local distributor: biuro@led-europe.pl
- If you have any problems with the product, contact the distributor in Poland: biuro@led-europe.pl
- Country of production: China