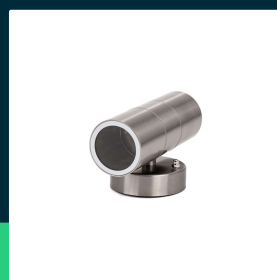
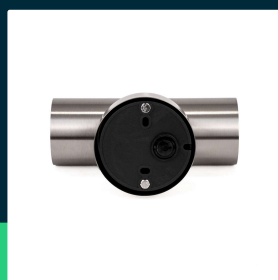
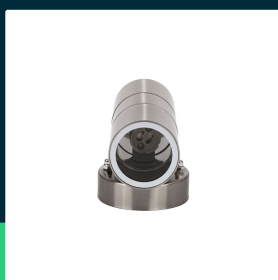




**Wal fitting GU10 steel body 2 way IP44**

SKU 7500 EAN 3800157617598 VT-7622

Related products (SKUs): 7569, 7570



**TECHNICAL SPECIFICATION**

Voltage	230V	Pack length	170mm
SKU	SKU 7500	Pack width	100mm
EAN barcode	3800157617598	Pack height	1050mm
Product code	VT-7622	Master carton	16
Series	Garden wall sconces	Quantity per pallet	560
Base	GU10	Brand	V-TAC
Input voltage	AC 220-240V	Warranty	2y
Frequency	50Hz	Certifications	CE, EMC, ROHS
Material	Stainless steel	ETIM	EC000301
Housing color	Brushed steel	CN code	8539 51 00
Type	Wall		
IP rating	IP44		
Compatibility	GU10		
Size	93x85x163mm		
Product weight	0,69		
Volume	0,001785		



**Wal fitting GU10 steel body 2 way IP44**

SKU 7500 EAN 3800157617598 VT-7622

Related products (SKUs): 7569, 7570

## Product description

- The angle of light distribution, color and power depend on the light sources used
- Operates in extreme temperatures from -20° to +45°
- Specially designed for outdoor use
- IP44 protection rating for safety
- The luminaire is adapted to GU10 light sources
- Material - brushed acid steel
- Dimensions 93x85x163mm

## GPSR Information

- Manufacturer: V-TAC Europe Ltd. Address: bul. "Rozhen" 41, 1271 Sofia, Bulgaria, office@v-tac.eu
- Importer: V-TAC Europe Ltd. Address: bul. "Rozhen" 41, 1271 Sofia, Bulgaria, office@v-tac.eu
- Distributor and importer in Poland: Led Europe Sp. z o.o. Address: ul. Starorudzka 12E 93-491 Łódź, Poland, biuro@led-europe.pl
- Documents confirming compliance of products with applicable safety standards are available on the website www.v-tac.eu. If the required documentation is not available, please contact the local distributor: biuro@led-europe.pl
- If you have any problems with the product, contact the distributor in Poland: biuro@led-europe.pl
- Country of production: China