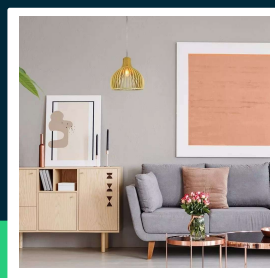
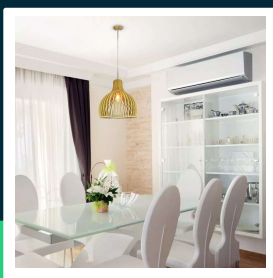
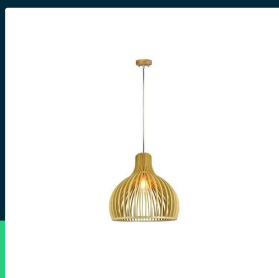




**Wooden pendant light with chrome decorative cap + canopy
+ lampshade round D350*450mm**

SKU 40501 EAN 3800157655118 VT-3450

Related products (SKUs): ---



TECHNICAL SPECIFICATION

Voltage	230V	Volume	0,096148
SKU	SKU 40501	Pack length	520mm
EAN barcode	3800157655118	Pack width	430mm
Product code	VT-3450	Pack height	430mm
Series	Ceiling lighting	Master carton	1
Base	E27	Brand	V-TAC
Shape	Round	Warranty	5y
Input voltage	AC:220-240V, 50Hz	Certifications	CE, EMC, ROHS
Material	Wood	ETIM	EC001743
Housing color	Wood	CN code	8539 51 00
Type	Suspended		
IP rating	IP20		
Size	350x450mm		
Cable length	1m		
Height	45cm		
Product weight	1,9		



**Wooden pendant light with chrome decorative cap + canopy
+ lampshade round D350*450mm**

SKU 40501 EAN 3800157655118 VT-3450

Related products (SKUs): ---

Product description

- Elegant series finished with wood
- Ease of installation
- Stylish colors
- Equipped with an E27 socket

GPSR Information

- Manufacturer: V-TAC Europe Ltd. Address: bul. "Rozhen" 41, 1271 Sofia, Bulgaria, office@v-tac.eu
- Importer: V-TAC Europe Ltd. Address: bul. "Rozhen" 41, 1271 Sofia, Bulgaria, office@v-tac.eu
- Distributor and importer in Poland: Led Europe Sp. z o.o. Address: ul. Starorudzka 12E 93-491 Łódź, Poland, biuro@led-europe.pl
- Documents confirming compliance of products with applicable safety standards are available on the website www.v-tac.eu. If the required documentation is not available, please contact the local distributor: biuro@led-europe.pl
- If you have any problems with the product, contact the distributor in Poland: biuro@led-europe.pl
- Country of production: China