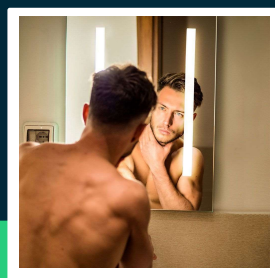
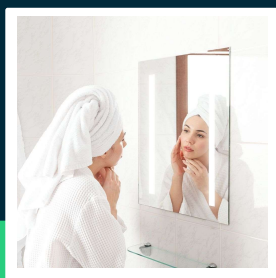
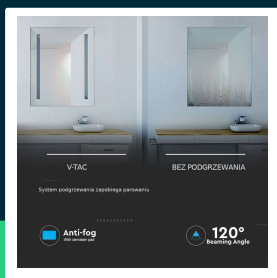
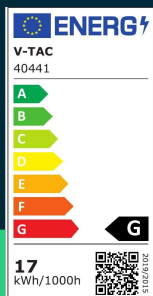




**17W LED mirror light rectangle chrome with pull cord switch
500*390*35mm IP44 anti fog 6400K**

SKU 40441 EAN 3800157654982 VT-8505

Related products (SKUs): ---



TECHNICAL SPECIFICATION

Power	17W	Housing color	Chrome	CN code	8539 51 00
Luminous flux (lm)	600 lm	IP rating	IP44	EPREL	1607867
Light color	Cool white	Ignition time (100%)	0.001s		
Color temperature	6400K	Color consistency	<6		
Beam angle	120°	Size	500x390x35mm		
Voltage	230V	Product weight	5,7		
SKU	SKU 40441	Volume	0,03409175		
EAN barcode	3800157654982	Pack length	605mm		
Product code	VT-8505	Pack width	490mm		
Series	Mirrors	Pack height	115mm		
Energy class	G	Master carton	1		
Base	Integrated LED fixture	Brand	V-TAC		
Shape	Rectangle	Warranty	2y		
Input voltage	AC:200-240V,50/60Hz	Certifications	CE, EMC, ROHS		
CRI	80+	Efficacy (lm/W)	35 lm/W		
Material	Glass	ETIM	EC010550		



**17W LED mirror light rectangle chrome with pull cord switch
500*390*35mm IP44 anti fog 6400K**

SKU 40441 EAN 3800157654982 VT-8505

Related products (SKUs): ---

Product description

- Vertical or horizontal installation
- A pad that prevents the mirror from fogging up
- Waterproof and dustproof IP44

GPSR Information

- Manufacturer: V-TAC Europe Ltd. Address: bul. "Rozhen" 41, 1271 Sofia, Bulgaria, office@v-tac.eu
- Importer: V-TAC Europe Ltd. Address: bul. "Rozhen" 41, 1271 Sofia, Bulgaria, office@v-tac.eu
- Distributor and importer in Poland: Led Europe Sp. z o.o. Address: ul. Starorudzka 12E 93-491 Łódź, Poland, biuro@led-europe.pl
- Documents confirming compliance of products with applicable safety standards are available on the website www.v-tac.eu. If the required documentation is not available, please contact the local distributor: biuro@led-europe.pl
- If you have any problems with the product, contact the distributor in Poland: biuro@led-europe.pl
- Country of production: China