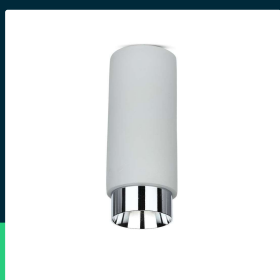




GU10 fitting gypsum metal with grey concrete chrome bottom

SKU 3138 EAN 3800157635370 VT-865-CHC

Related products (SKUs): ---



TECHNICAL SPECIFICATION

Voltage	230V	Product weight	1,33
SKU	SKU 3138	Volume	0,005096
EAN barcode	3800157635370	Pack length	140mm
Product code	VT-865-CHC	Pack width	140mm
Series	Concrete and plaster	Pack height	260mm
Base	GU10	Master carton	9
Shape	Round	Quantity per pallet	216
Input voltage	220-240V	Brand	V-TAC
Frequency	50/60Hz	Warranty	5y
Material	Plaster, metal	Certifications	CE, EMC, ROHS
Housing color	Grey, chrome	Parameters	Surface-mounted
Type	Ceiling	ETIM	ECO02892
IP rating	IP20	CN code	8539 51 00
Compatibility	GU10		
Size	200x80mm		
Mounting size	200 x 80mm		

**GU10 fitting gypsum metal with grey concrete chrome bottom**

SKU 3138 EAN 3800157635370 VT-865-CHC

Related products (SKUs): ---

Product description

- Plaster fixtures are a modern and interesting alternative to aluminum and steel fixtures, they do not corrode and are highly resistant to temperature changes.
- Possibility of self-painting in any color (in selected models)
- Dimensions - 200x80mm
- Material - High-quality plaster
- Suitable for all GU10 light sources

GPSR Information

- Manufacturer: V-TAC Europe Ltd. Address: bul. "Rozhen" 41, 1271 Sofia, Bulgaria, office@v-tac.eu
- Importer: V-TAC Europe Ltd. Address: bul. "Rozhen" 41, 1271 Sofia, Bulgaria, office@v-tac.eu
- Distributor and importer in Poland: Led Europe Sp. z o.o. Address: ul. Starorudzka 12E 93-491 Łódź, Poland, biuro@led-europe.pl
- Documents confirming compliance of products with applicable safety standards are available on the website www.v-tac.eu. If the required documentation is not available, please contact the local distributor: biuro@led-europe.pl
- If you have any problems with the product, contact the distributor in Poland: biuro@led-europe.pl
- Country of production: China