

GU10 fitting gypsum metal white plaster light with chrome bottom suqre

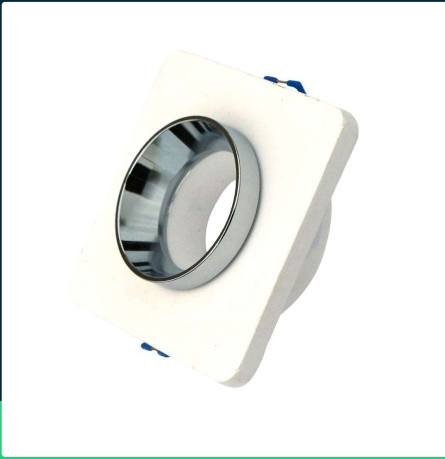
SKU 3119 EAN 3800157634441 VT-862-CHW

Related products (SKUs): ---



TECHNICAL SPECIFICATION

Voltage	230V	Product weight	0,331
SKU	SKU 3119	Volume	0,001521
EAN barcode	3800157634441	Pack length	130mm
Product code	VT-862-CHW	Pack width	90mm
Series	Concrete and plaster	Pack height	130mm
Base	GU10	Master carton	24
Shape	Square	Quantity per pallet	960
Input voltage	220-240V	Brand	V-TAC
Frequency	50/60Hz	Warranty	5y
Material	Plaster, metal	Certifications	CE, EMC, ROHS
Housing color	White, chrome	ETIM	ECO02892
Type	Fixed	CN code	8539 51 00
IP rating	IP20		
Compatibility	GU10		
Size	80		
Mounting size	80		

**GU10 fitting gypsum metal white plaster light with chrome bottom suqre**

SKU 3119 EAN 3800157634441 VT-862-CHW

Related products (SKUs): ---

Product description

- Plaster fixtures are a modern and interesting alternative to aluminum and steel fixtures, they do not corrode and are highly resistant to temperature changes.
- Possibility of self-painting in any color (in selected models)
- Dimensions - 100x100x40mm
- Mounting hole - 80mm
- Material - High-quality plaster
- Suitable for all GU10 light sources

GPSR Information

- Manufacturer: V-TAC Europe Ltd. Address: bul. "Rozhen" 41, 1271 Sofia, Bulgaria, office@v-tac.eu
- Importer: V-TAC Europe Ltd. Address: bul. "Rozhen" 41, 1271 Sofia, Bulgaria, office@v-tac.eu
- Distributor and importer in Poland: Led Europe Sp. z o.o. Address: ul. Starorudzka 12E 93-491 Łódź, Poland, biuro@led-europe.pl
- Documents confirming compliance of products with applicable safety standards are available on the website www.v-tac.eu. If the required documentation is not available, please contact the local distributor: biuro@led-europe.pl
- If you have any problems with the product, contact the distributor in Poland: biuro@led-europe.pl
- Country of production: China