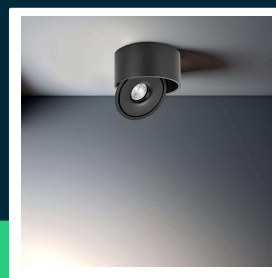
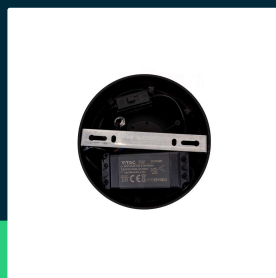
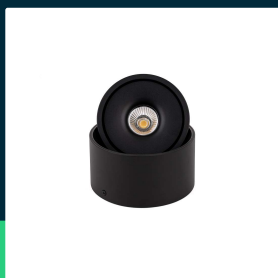
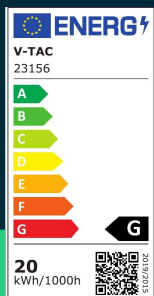




20W LED surface COB downlight 3in1 black body

SKU 23156 EAN 3800170211414 VT-2825

Related products (SKUs): 23155



TECHNICAL SPECIFICATION

Power	20W	CRI	90+	Certifications	CE, EMC, ROHS
Luminous flux (lm)	1408 lm	Material	Aluminium	Efficacy (lm/W)	70 lm/W
Light color	CCT tunable white	Housing color	Black	ETIM	ECO02892
Color temperature	3000K-4000K-6400K	Dimming	NIE	CN code	8539 51 00
Beam angle	25°	IP rating	IP20	EPREL	1718708
Voltage	230V	Ignition time (100%)	0.001s		
SKU	SKU 23156	On/Off cycles	>15000		
EAN barcode	3800170211414	Size	148x75mm		
Product code	VT-2825	Product weight	0,02		
Series	Downlight	Volume	0,00003		
Energy class	G	Pack length	148mm		
Base	Integrated LED fixture	Pack width	75mm		
Shape	Round	Pack height	80mm		
LED module type	COB	Master carton	30		
Lifetime	20000h	Brand	V-TAC		
Input voltage	AC:100-240V, 50/60Hz	Warranty	2y		

**20W LED surface COB downlight 3in1 black body**

SKU 23156 EAN 3800170211414 VT-2825

Related products (SKUs): 23155

Product description

- V-TAC tiltable surface-mounted downlight
- High-performance COB LED CHIPS
- High-quality power supply
- Excellent color rendering thanks to CRI>90
- Built-in light color switch

GPSR Information

- Manufacturer: V-TAC Europe Ltd. Address: bul. "Rozhen" 41, 1271 Sofia, Bulgaria, office@v-tac.eu
- Importer: V-TAC Europe Ltd. Address: bul. "Rozhen" 41, 1271 Sofia, Bulgaria, office@v-tac.eu
- Distributor and importer in Poland: Led Europe Sp. z o.o. Address: ul. Starorudzka 12E 93-491 Łódź, Poland, biuro@led-europe.pl
- Documents confirming compliance of products with applicable safety standards are available on the website www.v-tac.eu. If the required documentation is not available, please contact the local distributor: biuro@led-europe.pl
- If you have any problems with the product, contact the distributor in Poland: biuro@led-europe.pl
- Country of production: China