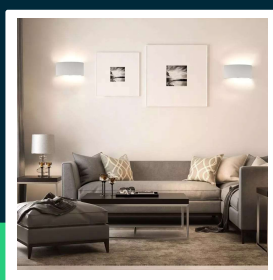
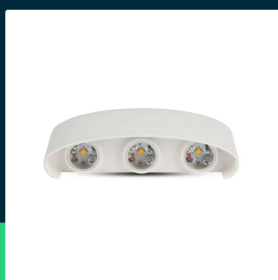
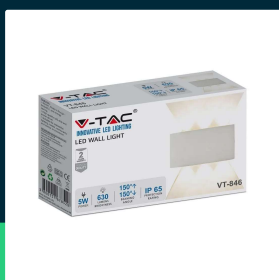
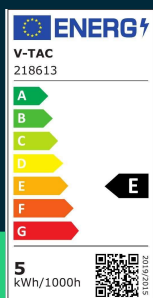




6W LED wall light sand white IP54 3000K

SKU 218613 EAN 3800157678520 VT-846

Related products (SKUs): 8613, 8614, 8615, 8616, 218614, 218615, 218616



TECHNICAL SPECIFICATION

Power	6W	Housing color	White	Efficacy (lm/W)	105 lm/W
Luminous flux (lm)	630 lm	Type	Wall	ETIM	ECO02892
Light color	Warm white	Dimming	NIE	CN code	8539 51 00
Color temperature	3000K	IP rating	IP54	EPREL	1212283
Beam angle	150°	Ignition time (100%)	0.001s		
Voltage	230V	Color consistency	<6		
SKU	SKU 218613	Size	170x40x80mm		
EAN barcode	3800157678520	Product weight	0,539		
Product code	VT-846	Volume	0,000748125		
Series	Wall sconces	Pack length	175mm		
Energy class	E	Pack width	45mm		
Base	Integrated LED fixture	Pack height	95mm		
Lifetime	20000h	Master carton	20		
Power factor	>0,6	Brand	V-TAC		
CRI	80+	Warranty	2y		
Material	Aluminium	Certifications	CE, EMC, ROHS		



6W LED wall light sand white IP54 3000K

SKU 218613 EAN 3800157678520 VT-846

Related products (SKUs): 8613, 8614, 8615, 8616, 218614, 218615, 218616

Product description

- Modern wall fixture
- Material - Aluminum
- High-quality power supply
- Available colors 3000K-4000K
- IP54 rating
- Eye protection - no flicker
- Beam angle 150° Top / 150° Bottom
- Available in white and black versions
- Dimensions 170x40x80mm

GPSR Information

- Manufacturer: V-TAC Europe Ltd. Address: bul. "Rozhen" 41, 1271 Sofia, Bulgaria, office@v-tac.eu
- Importer: V-TAC Europe Ltd. Address: bul. "Rozhen" 41, 1271 Sofia, Bulgaria, office@v-tac.eu
- Distributor and importer in Poland: Led Europe Sp. z o.o. Address: ul. Starorudzka 12E 93-491 Łódź, Poland, biuro@led-europe.pl
- Documents confirming compliance of products with applicable safety standards are available on the website www.v-tac.eu. If the required documentation is not available, please contact the local distributor: biuro@led-europe.pl
- If you have any problems with the product, contact the distributor in Poland: biuro@led-europe.pl
- Country of production: China