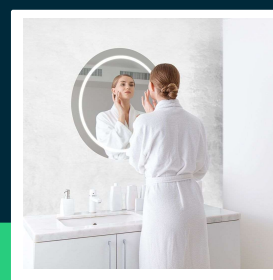
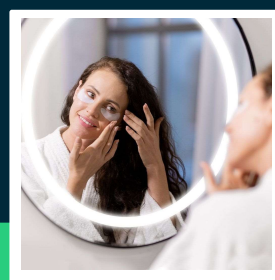
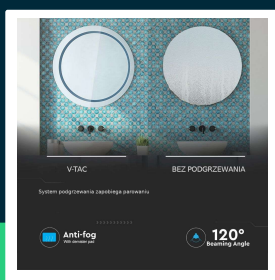
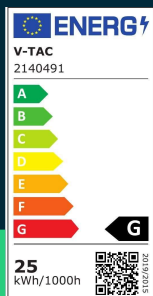




**25W LED mirror light round with touch switch CCT changeable d:600mm**

SKU 2140491 EAN 3800157685573 VT-8602

Related products (SKUs): 40491



## TECHNICAL SPECIFICATION

Power	25W	Housing color	Chrome	CN code	8539 51 00
Luminous flux (lm)	85 lm	IP rating	IP44	EPREL	1247414
Light color	CCT tunable white	Ignition time (100%)	0.001s		
Color temperature	3W1	Color consistency	<6		
Beam angle	120°	Size	600x35mm		
Voltage	230V	Product weight	8,1		
SKU	SKU 2140491	Volume	0,05635		
EAN barcode	3800157685573	Pack length	700mm		
Product code	VT-8602	Pack width	120mm		
Series	Mirrors	Pack height	700mm		
Energy class	G	Master carton	1		
Base	Integrated LED fixture	Brand	V-TAC		
Shape	Round	Warranty	2y		
Input voltage	AC:200-240V,50/60Hz	Certifications	CE, EMC, ROHS		
CRI	80+	Efficacy (lm/W)	5 lm/W		
Material	Glass	ETIM	ECO10550		



**25W LED mirror light round with touch switch CCT changeable d:600mm**

SKU 2140491 EAN 3800157685573 VT-8602

Related products (SKUs): 40491

## Product description

- Vertical or horizontal installation
- A pad that prevents the mirror from fogging up
- Waterproof and dustproof IP44

## GPSR Information

- Manufacturer: V-TAC Europe Ltd. Address: bul. "Rozhen" 41, 1271 Sofia, Bulgaria, office@v-tac.eu
- Importer: V-TAC Europe Ltd. Address: bul. "Rozhen" 41, 1271 Sofia, Bulgaria, office@v-tac.eu
- Distributor and importer in Poland: Led Europe Sp. z o.o. Address: ul. Starorudzka 12E 93-491 Łódź, Poland, biuro@led-europe.pl
- Documents confirming compliance of products with applicable safety standards are available on the website www.v-tac.eu. If the required documentation is not available, please contact the local distributor: biuro@led-europe.pl
- If you have any problems with the product, contact the distributor in Poland: biuro@led-europe.pl
- Country of production: China