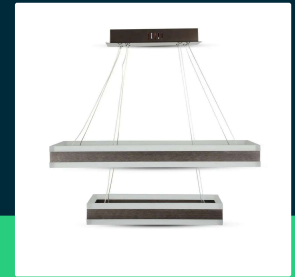
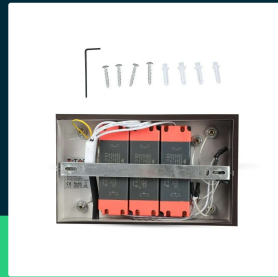
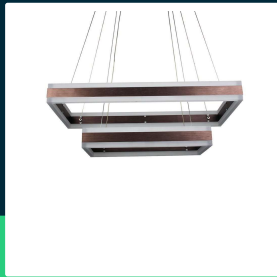



113W soft light chandelier dimmable coffee 3000K

SKU 213988 EAN 3800157692915 VT-101-2D-C-N

Related products (SKUs): ---


TECHNICAL SPECIFICATION

Power	113W	Frequency	50/60Hz	Volume	0,026166
Luminous flux (lm)	6300 lm	Power factor	>0,9	Pack length	650mm
Light color	Warm white	CRI	80+	Pack width	350mm
Color temperature	3000K	Material	Acrylic, aluminium	Pack height	110mm
Beam angle	360°	Housing color	Coffee	Master carton	1
Voltage	230V	Type	Suspended	Quantity per pallet	35
SKU	SKU 213988	Dimming	TAK	Brand	V-TAC
EAN barcode	3800157692915	IP rating	IP20	Warranty	3y
Product code	VT-101-2D-C-N	Ignition time (100%)	0.001s	Certifications	CE, EMC, ROHS
Series	Ceiling lighting	Color consistency	<6	Efficacy (lm/W)	55 lm/W
Energy class	G	On/Off cycles	>10000	ETIM	EC001743
Base	Integrated LED fixture	Operating conditions	-20° +45°	CN code	8539 51 00
LED module type	SMD	Size	600x1200mm	EPREL	1356512
Lifetime	>20000h	Mounting size	600 x 300 mm / H1200 mm / Base 250 mm		
Input voltage	AC:180-240V, 50/60Hz	Product weight	3,7		



113W soft light chandelier dimmable coffee 3000K

SKU 213988 EAN 3800157692915 VT-101-2D-C-N

Related products (SKUs): ---

Product description

- Stylish fixture available in various versions
- Easy assembly
- Dimmable fixture
- Supply voltage 220-240V

GPSR Information

- Manufacturer: V-TAC Europe Ltd. Address: bul. "Rozhen" 41, 1271 Sofia, Bulgaria, office@v-tac.eu
- Importer: V-TAC Europe Ltd. Address: bul. "Rozhen" 41, 1271 Sofia, Bulgaria, office@v-tac.eu
- Distributor and importer in Poland: Led Europe Sp. z o.o. Address: ul. Starorudzka 12E 93-491 Łódź, Poland, biuro@led-europe.pl
- Documents confirming compliance of products with applicable safety standards are available on the website www.v-tac.eu. If the required documentation is not available, please contact the local distributor: biuro@led-europe.pl
- If you have any problems with the product, contact the distributor in Poland: biuro@led-europe.pl
- Country of production: China