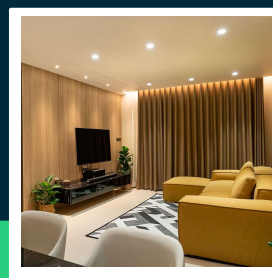
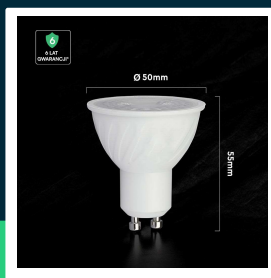
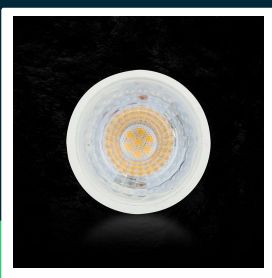
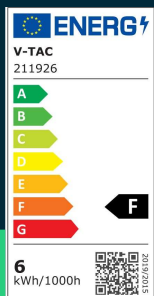




**6W GU10 ripple plastic spotlight with CREE CHIP 3000K  
110°d 6yrs warranty**

SKU 211926 EAN 3800170252479 VT-247

Related products (SKUs): 192, 193, 198, 199, 200, 2826, 2827, 21198, 194, 21192, 21193, 21194, 21199, 21200, 211921, 211931, 211936, 211941, 211946, 211981, 211991, 2119211, 2119311, 2119411



**TECHNICAL SPECIFICATION**

Power	6W	Frequency	50Hz	Product weight	0,03
Equivalent power	60W	Power factor	>0,5	Volume	0,000234
Luminous flux (lm)	445 lm	CRI	80+	Pack length	50mm
Light color	Warm white	Material	Plastic	Pack width	50mm
Color temperature	3000K	Housing color	White	Pack height	80mm
Beam angle	110°	Type	Light sources	Master carton	200
Voltage	230V	Dimming	NIE	Quantity per pallet	8400
SKU	SKU 211926	IP rating	IP20	Brand	V-TAC
EAN barcode	3800170252479	Ignition time (100%)	0.001s	Warranty	6y
Product code	VT-247	Color consistency	<6	Certifications	CE, EMC, ROHS
Energy class	F	On/Off cycles	>20000	Efficacy (lm/W)	75 lm/W
Base	GU10	Operating conditions	-20° +45°	ETIM	EC001959
Shape	PAR16	Size	50x55mm	CN code	8539 52 00
LED module type	CREE LED	Length	50 mm	EPREL	2398218
Lifetime	25000h	Width	50 mm		
Input voltage	AC:220-240V, 50Hz	Height	80 mm		

**6W GU10 ripple plastic spotlight with CREE CHIP 3000K  
110'd 6yrs warranty**

SKU 211926    EAN 3800170252479    VT-247

Related products (SKUs): 192, 193, 198, 199, 200, 2826, 2827, 21198, 194, 21192, 21193, 21194, 21199, 21200, 211921, 211931, 211936, 211941, 211946, 211981, 211991, 2119211, 2119311, 2119411

## Product description

• The V-TAC GU10 LED bulb with a 6 year warranty uses new generation CREE chips that ensure exceptional reliability, high efficiency and long life. CREE LED is a world leader in lighting technology with over 35 years of experience and over 1800 patents, which translates into stable operation and high light quality. The 6W model is an energy-saving replacement for the traditional 60W halogen bulb. The bulb's structure is made of durable materials ensuring lightness and easy installation in standard GU10 sockets. The long lifespan of 25000 hours makes the bulb perfect for long-term use in residential and commercial spaces.

## GPSR Information

- Manufacturer: V-TAC Europe Ltd. Address: bul. "Rozhen" 41, 1271 Sofia, Bulgaria, office@v-tac.eu
- Importer: V-TAC Europe Ltd. Address: bul. "Rozhen" 41, 1271 Sofia, Bulgaria, office@v-tac.eu
- Distributor and importer in Poland: Led Europe Sp. z o.o. Address: ul. Starorudzka 12E 93-491 Łódź, Poland, biuro@led-europe.pl
- Documents confirming compliance of products with applicable safety standards are available on the website [www.v-tac.eu](http://www.v-tac.eu). If the required documentation is not available, please contact the local distributor: biuro@led-europe.pl
- If you have any problems with the product, contact the distributor in Poland: biuro@led-europe.pl
- Country of production: China