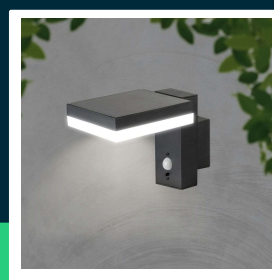
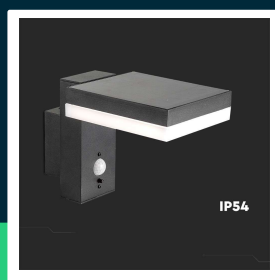
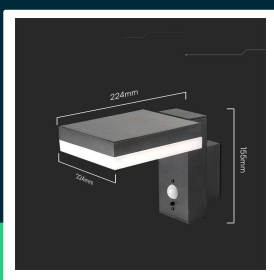




5.5W LED Solar wall lamp SMD with PIR sensor square IP44 3000K

SKU 10402 EAN 3800170207714 VT-1147

Related products (SKUs): 23016



TECHNICAL SPECIFICATION

Power	5,5W	Dimming	NIE	ETIM	EC000301
Luminous flux (lm)	220 lm	IP rating	IP54	CN code	8539 51 00
Light color	Warm white	Charging time	8-10h		
Color temperature	3000K	Operating time	6-8h		
Voltage	Solar	Battery capacity	2200mAh, Li-Ion, DC: 3.7V		
SKU	SKU 10402	Size	224x130x155mm		
EAN barcode	3800170207714	Product weight	0,98		
Product code	VT-1147	Volume	0,006417		
Series	Garden wall sconces	Pack length	230mm		
Base	Integrated LED fixture	Pack width	140mm		
Shape	Square	Pack height	165mm		
LED module type	SMD	Master carton	6		
CRI	80+	Brand	V-TAC		
Material	Aluminium, PC	Warranty	3y		
Housing color	Black	Certifications	CE, EMC, ROHS		
Type	Outdoor lighting	Efficacy (lm/W)	40 lm/W		

**5.5W LED Solar wall lamp SMD with PIR sensor square IP44 3000K**

SKU 10402 EAN 3800170207714 VT-1147

Related products (SKUs): 23016

Product description

- A modern solar luminaire equipped with a motion sensor
- High quality Polycrystalline DC solar panel: 5.5V, 1.8W
- Durable lithium battery 3,7V 2000mAh
- 8-10 hours of charging equals 6-8 hours of light
- Recommended installation height 1,8-2,2m
- High IP54 rating

GPSR Information

- Manufacturer: V-TAC Europe Ltd. Address: bul. "Rozhen" 41, 1271 Sofia, Bulgaria, office@v-tac.eu
- Importer: V-TAC Europe Ltd. Address: bul. "Rozhen" 41, 1271 Sofia, Bulgaria, office@v-tac.eu
- Distributor and importer in Poland: Led Europe Sp. z o.o. Address: ul. Starorudzka 12E 93-491 Łódź, Poland, biuro@led-europe.pl
- Documents confirming compliance of products with applicable safety standards are available on the website www.v-tac.eu. If the required documentation is not available, please contact the local distributor: biuro@led-europe.pl
- If you have any problems with the product, contact the distributor in Poland: biuro@led-europe.pl
- Country of production: China